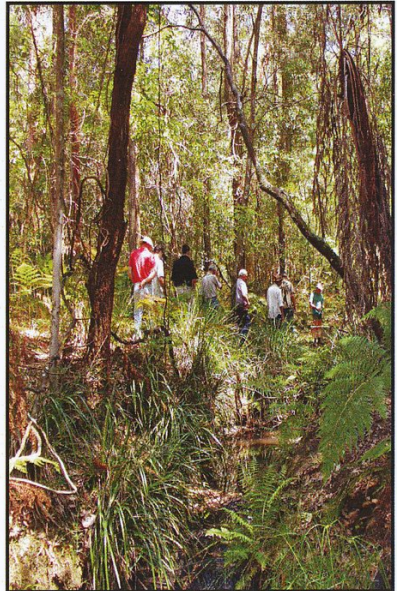




STILL CREEK LANDCARE



Landowners working together to care for our land

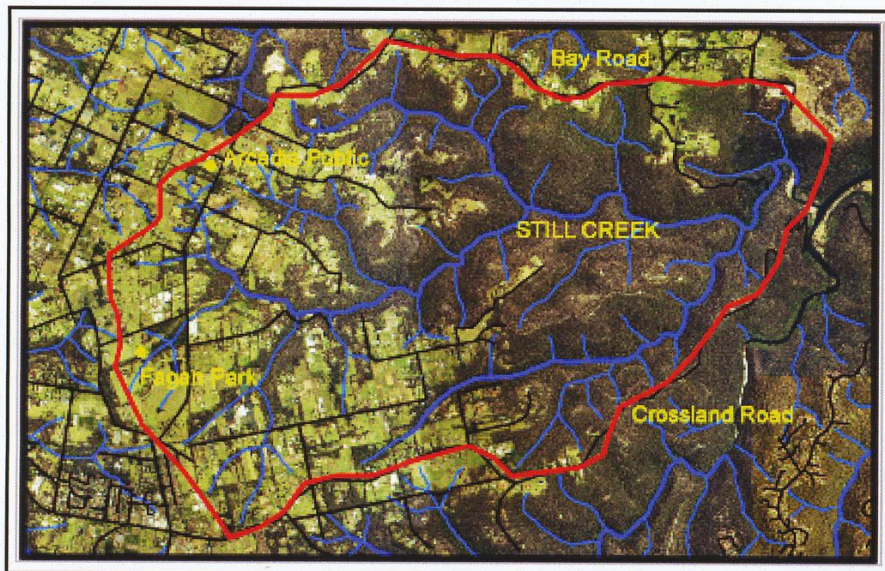
in

ARCADIA BERRILEE GALSTON

What area do we cover?

We focus on the Still Creek catchment. This includes Still, George Hall, Charltons and Halls Creeks down to Crosslands. That's 1400 Ha and about 400 properties.

Still Creek flows into Berowra Creek at Crosslands and then the Hawkesbury River.

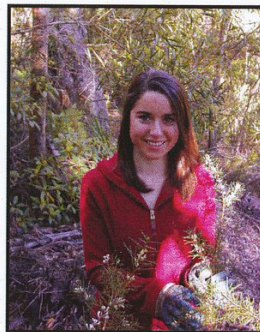


Why should we care for our land?

Most of the catchment is in good condition. By working together we can keep it that way.

The benefits include:

- getting to know other landowners
- getting knowledge and skills to work more efficiently on our own land
- improving the whole area and this improves our own property values.



Who are we?

We are residents of Galston, Arcadia and Berrilee who love living in this area and want it to remain beautiful, enjoyable and productive for future generations.

We include owners of bush blocks, horse properties, nurseries, market gardens, hobby farms and others.



What do we do?

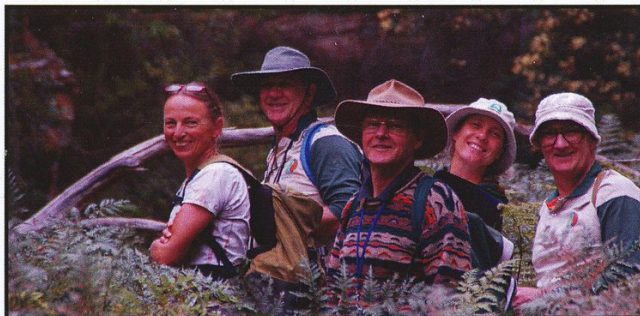
By pooling resources and practical knowledge, we help each other in managing our properties in a sustainable manner. We go on bushwalks, help residents identify native plants and weeds, offer advice and encouragement on weed, soil and water quality issues and bush regeneration techniques.

But wait, there's more....

Being a Landcare Group, we also

- apply for grants to fund community projects
- get advice from experts
- hold field days
- test water quality as part of the Streamwatch programme
- have working bees.





Join us!

Come along to any event as an observer. Meet like-minded people. Become involved in practical activities to improve this beautiful place in which we live. By working together we can make a difference.

For more information, contact us:

Website: www.stillcreeklandcare.com.au

Email: StillCreekLandcare@iinet.net.au

Phone: Nick Chartorisky 9653 2056

Mail: 31 Smalls Road Arcadia

We are independent of government and other agencies but have the support of these organisations:



CARING
FOR
OUR
COUNTRY
